

ASSESSOR'S BLOCK BOOK FOR HARRIS COUNTY, TEXAS

Block of 6 to 9 - RES. A TO D.

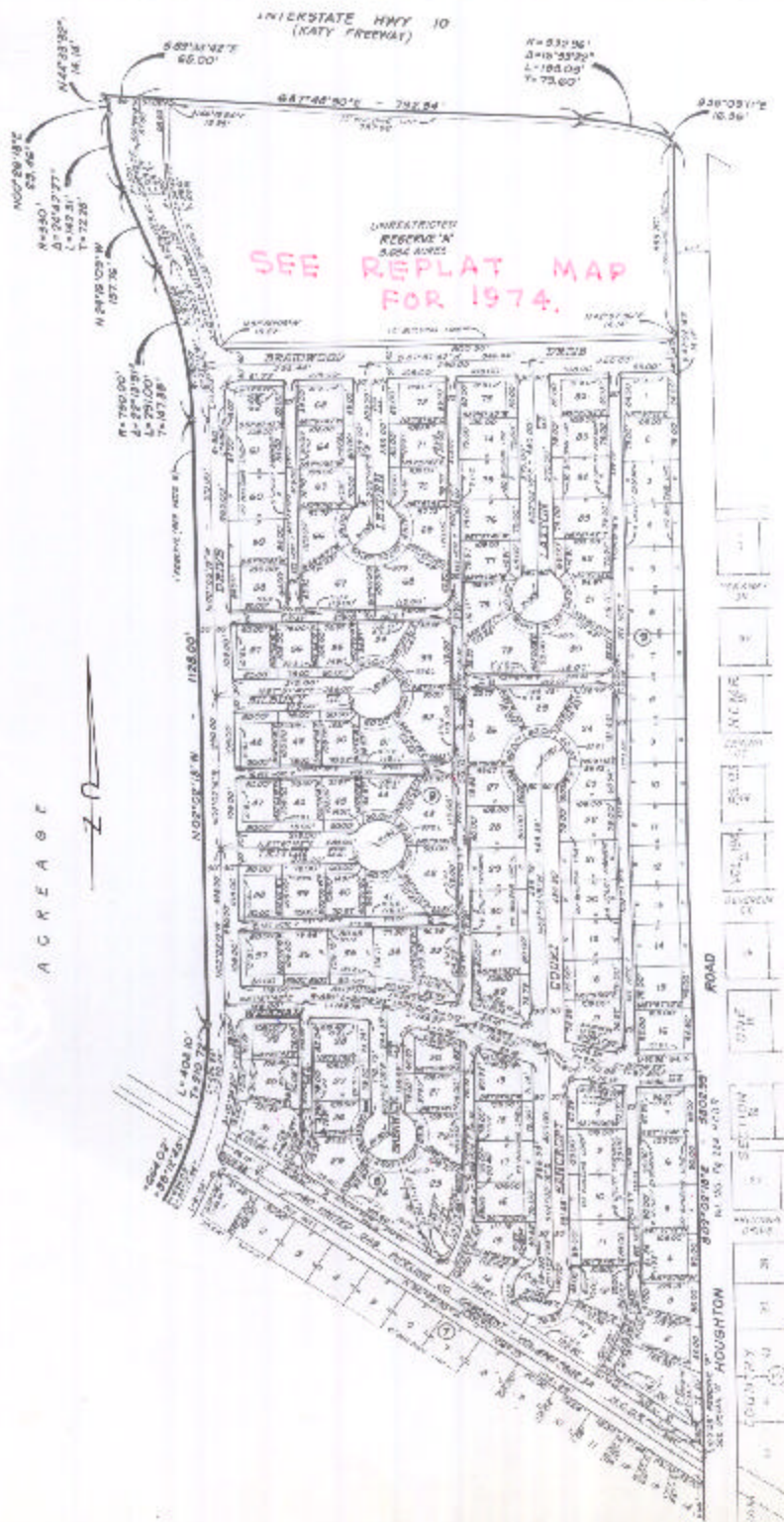
Abstract No. 1352 Survey or Addition NOTTINGHAM COUNTRY SEC. 2. Plat No. 72-23). S. D. 19 Village.

Description: 92.786 AC. W.C.R.R.CO. SUR. A-1359. RESUBD. PLATS 76-76-77 MEADOWBROOK FARMS VOL. 26 PG. 50.

PATENT					CERTIFICATE				
No.	Vol.	TO WHOM ISSUED	DATE			No.	CLASS	CHARACTER	TO WHOM ISSUED
			M	D	Y				

Scale: 200' = one inch.
KICKERILLO CO. 1972.
KICKERILLO CO.

PLATE: 1 OF 2.



ACREAGE
— 20 —