

ASSESSOR'S BLOCK BOOK FOR HARRIS COUNTY, TEXAS

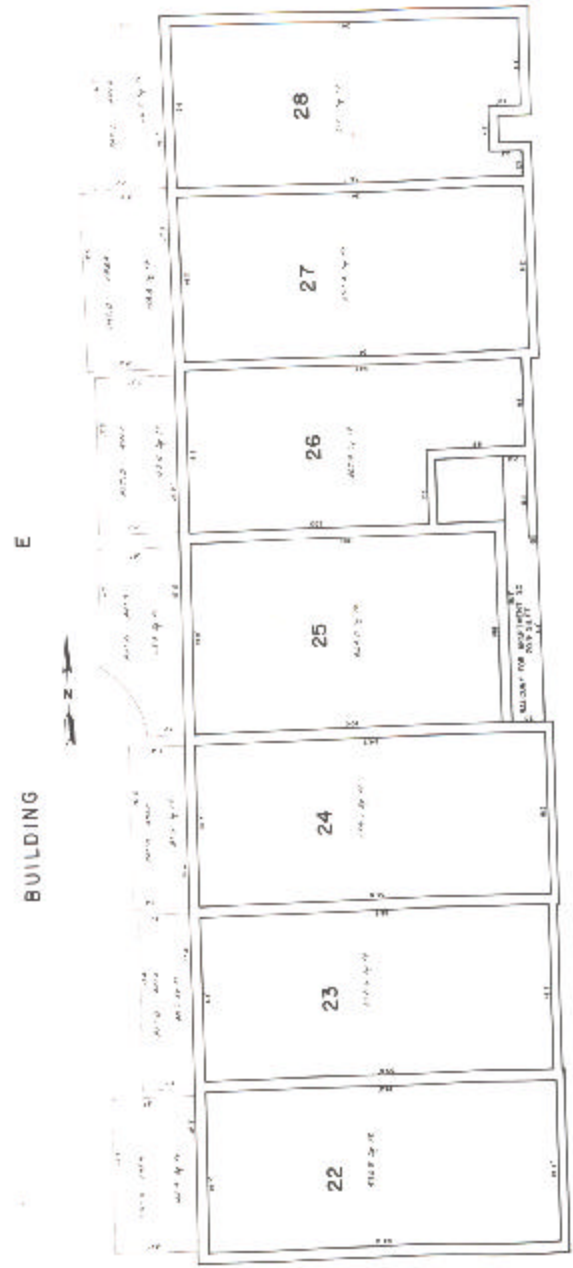
Block or Abstract No. 696 Survey or Addition 811 LOVETT BLVD. TOWNHOUSE Plat No. 72-192 S. D. 1 Village

Description CONDOMINIUM

PATENT				CERTIFICATE			
No.	Vol.	TO WHOM ISSUED	DATE	ACRAGE	No.	CLASS	TO WHOM ISSUED
			M D Y				

Scale 10' = one inch.

PLATE: 8 OF 12.



STORY

FIRST