

ASSESSOR'S BLOCK BOOK FOR HARRIS COUNTY, TEXAS

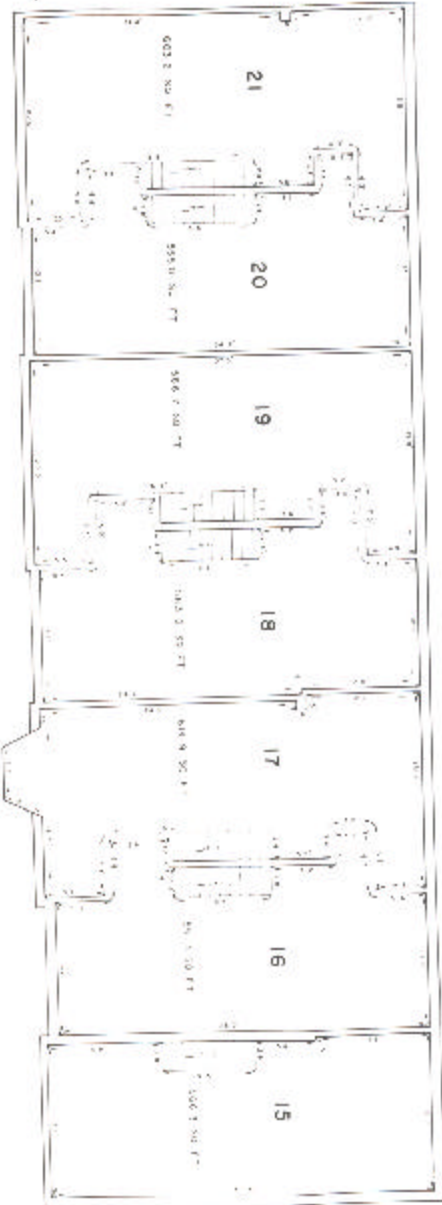
Block or Abstract No. 696 Survey or Addition 8th LOVETT BLVD. TOWNHOUSE Plat No. 72-192. S. D. No. Village

PATENT				CERTIFICATE			
No.	Vol.	TO WHOM ISSUED	DATE	ACREAGE	No.	CLASS	TO WHOM ISSUED

Scale 10' = one inch.

PLATE: 7 OF 12.

SECOND STORY



BUILDING D