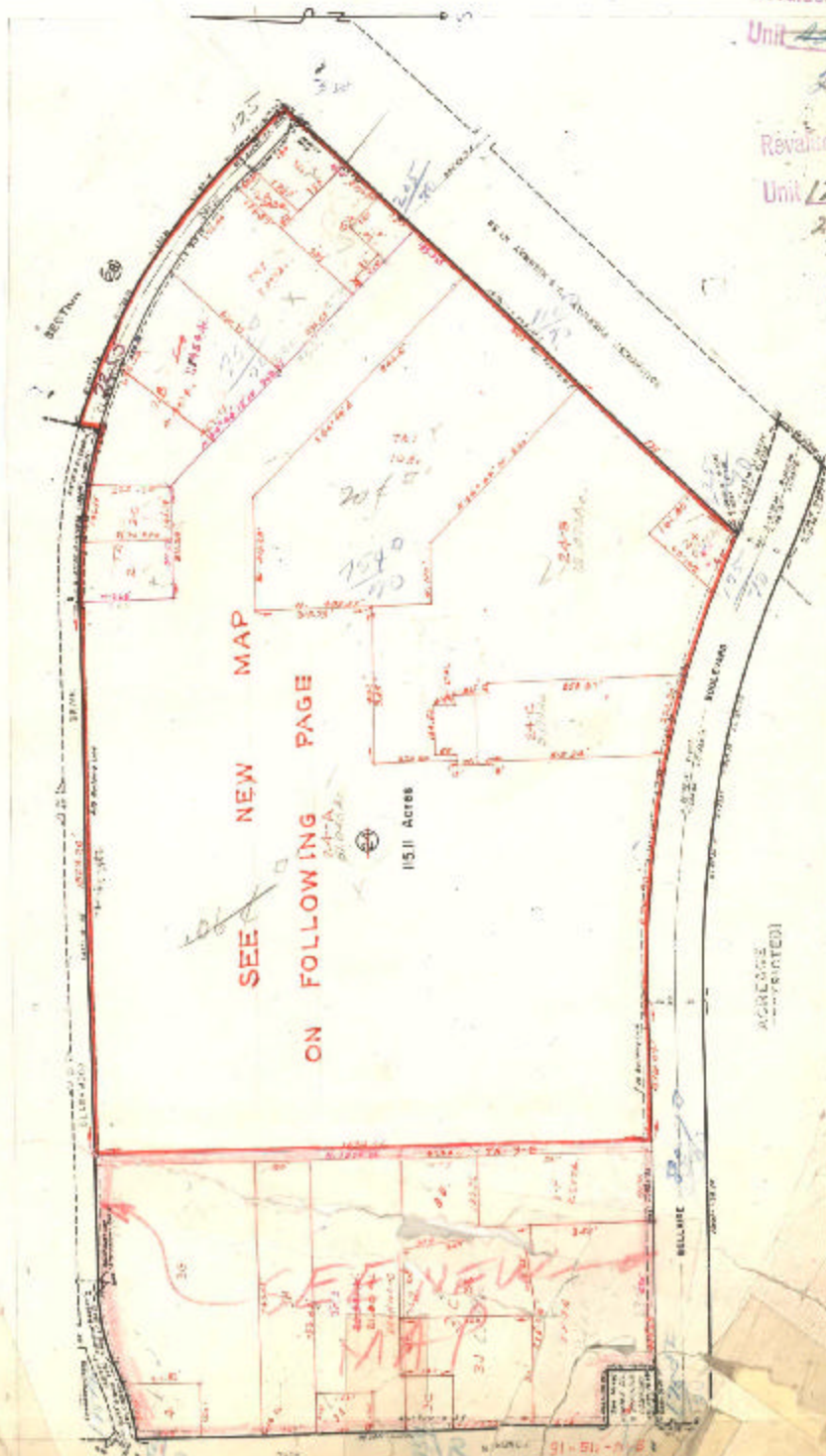


ASSESSOR'S BLOCK BOOK FOR HARRIS COUNTY, TEXAS

Block or 24 SEC. 12  
Abstract No 1103-560 Survey or Addition SHARPSTOWN INDUS. PARK Plat No. S. D. 1 VILLAGE.  
126.00 AC. J.B. PIER SUR. A-1103 - C. McKENZIE SUR. A-560, VOL. 91 PG. 511 & 516

PATENT				CERTIFICATE				
No.	Vol.	TO WHOM ISSUED	DATE	ACREAGE	No.	CLASS	CHARACTER	TO WHOM ISSUED
			M D Y					

Scale 300' = one inch  
R.E. SMITH & V.P. NEUHAYS ET AL. 1960.  
SHARPSTOWN REALTY CO.



1961  
1.00 net  
Revalued 1964  
Unit 4 Shown  
20 ft x 100 ft  
Revalued 1969  
Unit 125-100  
20 ft x 100 ft  
1978  
1/2 Shown  
50% Ratio

42