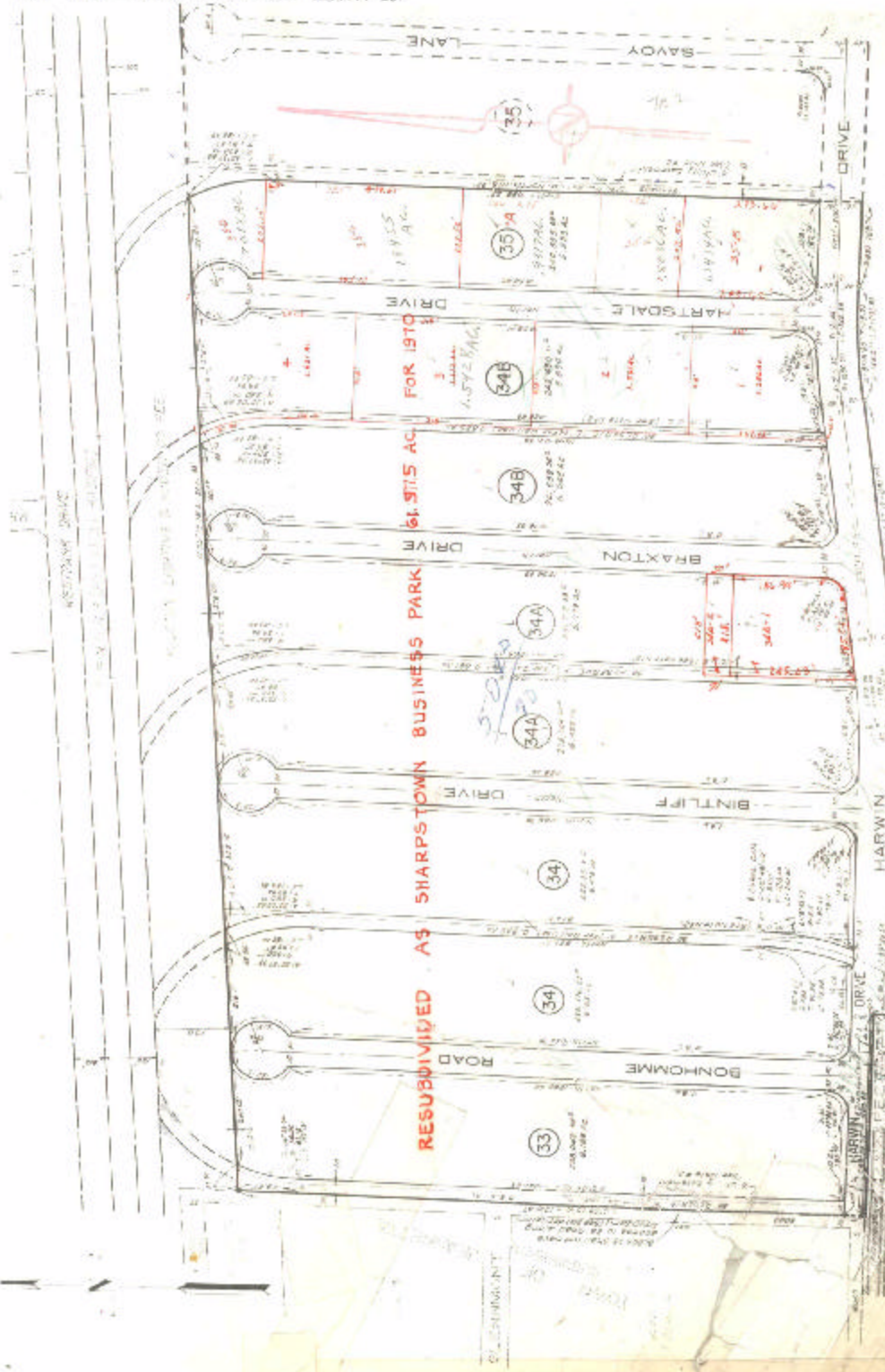


ASSESSOR'S BLOCK BOOK FOR HARRIS COUNTY, TEXAS

Block or 33-34-34A-34B-35-RES E-F-G-H, REPLAT SEC 10
Abstract No. 852-1026 Survey of Addition SHARPS TOWN INDUSTRIAL PARK Plat No. 65-14 S. D. 1, Village
Description: 61.975 AC. J.H. WALTON SUR. A-852-G C. & S.F.R.R. CO. SUR. A-1026. RESUBD PT. SHARPS TOWN INDUS. PARK SEC. 10. VOL. 93 PG. 56-59.

PATENT					CERTIFICATE			
No.	Vol.	TO WHOM ISSUED	DATE	ACRAGE	No.	CLASS	CHARACTER	TO WHOM ISSUED
			V	P				

Scale 700 = one inch. SHARPS TOWN REALTY CO.



Revalued 19 65
Unit 15 65
1175
AS SHARPS TOWN
5071 RATE