

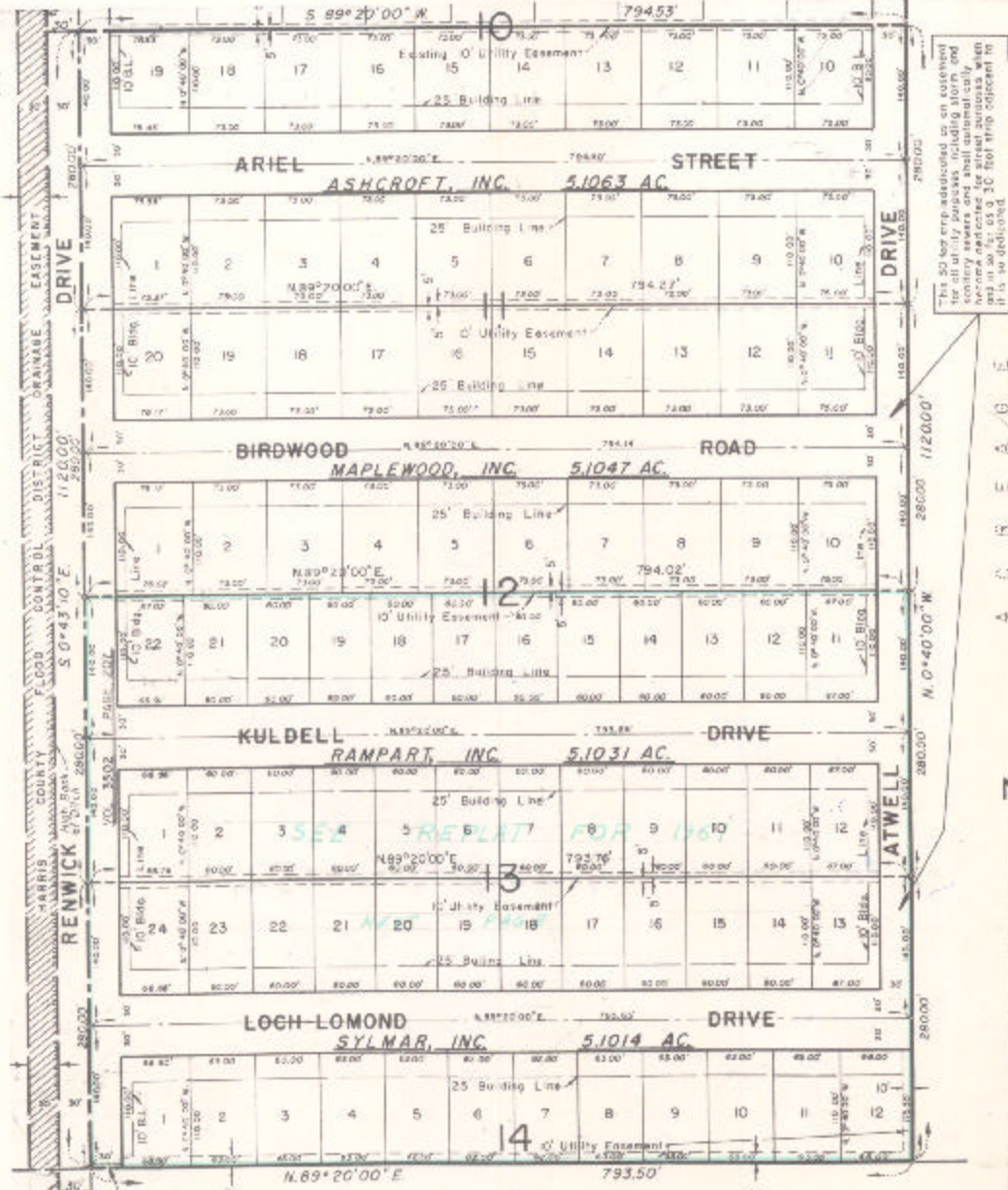
ASSESSOR'S BLOCK BOOK FOR HARRIS COUNTY, TEXAS

Block or Abstract No. 10 THRU 14  
Abstract No. 132 Survey or Addition: MAPLEWOOD SEC. 13 Plat No. S. D. 1 VILLAGE  
20.4155 AC. WM. J. BROWN SUR. A-132 - VOL. 41 PG. 88

PATENT				CERTIFICATE			
No.	Vol.	TO WHOM ISSUED	DATE	No.	CLASS	CHARACTER	TO WHOM ISSUED
			M	D	Y		

Scale 100' one inch  
FRANK K. MEYER 1959  
ASHCROFT INC.

1981  
50 FT  
Revalued 19 61  
Unit 2 1/2



This 50 foot strip, dedicated as an easement for utility purposes, including storm and sanitary sewers and shall automatically become dedicated for street purposes when the adjacent lots are subdivided in a recorded plat.

NOTE  
All 10 foot utility easements shown extend 5 feet on either side of a common lot line unless otherwise indicated.

A G R E A G E