

ASSESSOR'S BLOCK BOOK FOR HARRIS COUNTY, TEXAS

Block or Abstract No.                      SEC. 1  
 Survey or Addition SHARPSTOWN COUNTRY CLUB ESTATES Plat No.                      S. D. HOUSTON D. D.  
S-62 AC. J.B. PIER. SUR. A-1103. PT. BLK 20 WESTMORELAND FARMS SEC. 3, VOL. 52 PG. 10.

PATENT				CERTIFICATE			
No.	Vol.	TO WHOM ISSUED	DATE	No.	CLASS	CHARACTER	TO WHOM ISSUED

Scale 100' = one inch. 1917  
 FRANK W. SHARP PLATS 13-14-15  
 SHARPSTOWN, DEK. CO.

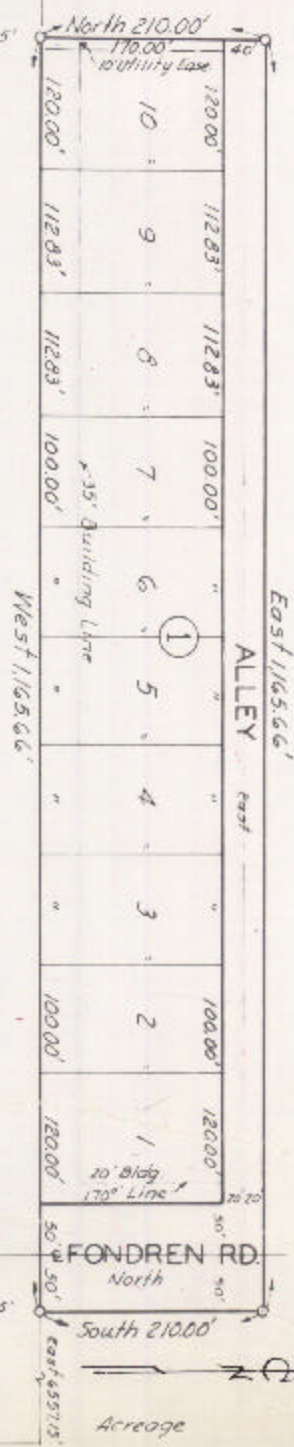
SEE REPLAT ON FOLLOWING PAGE

25<sup>00</sup> Units  
1958

1981  
75<sup>00</sup>

SHARPSTOWN COUNTRY CLUB TRACT

BELLAIRE BLVD.



South 3802 76'