

ASSESSOR'S BLOCK BOOK FOR HARRIS COUNTY, TEXAS

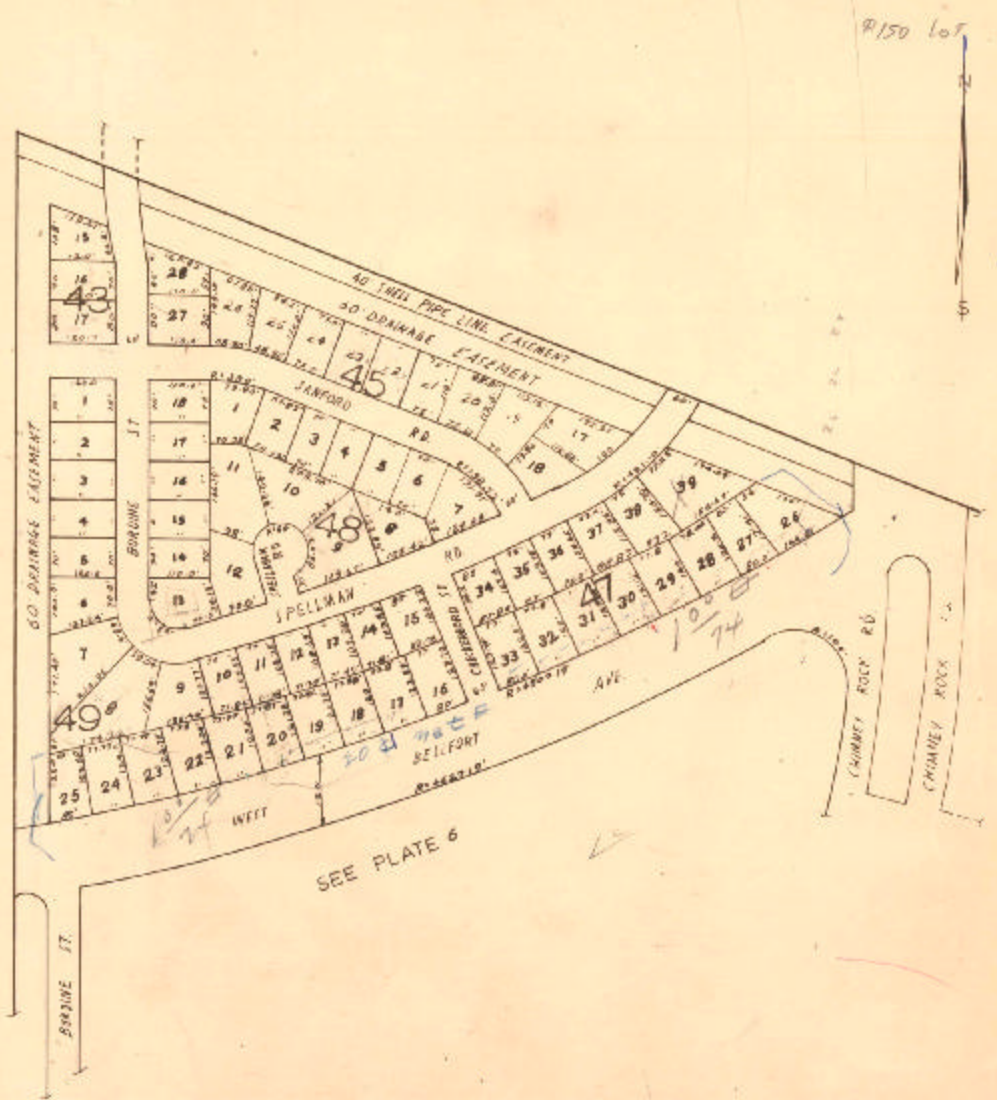
Block or Abstract No. <sup>43</sup> 42-47-48 Survey or Addition WESTBURY SECTION 3 Plat No. A. D. 1 Village

Description: W.M. BRONAUGH + H.L.B. R.R. SURVEYS

PATENT				CERTIFICATE				
No.	Vol.	TO WHOM ISSUED	DATE	ACREAGE	No.	CLASS	CHARACTER	TO WHOM ISSUED

Scale 200 feet

PLATE 7 OF 7



R150 lot

20 to plat Sept 22 1968  
in business lots  
1974

SEE PLATE 6