

ASSESSOR'S BLOCK BOOK FOR HARRIS COUNTY, TEXAS

1938

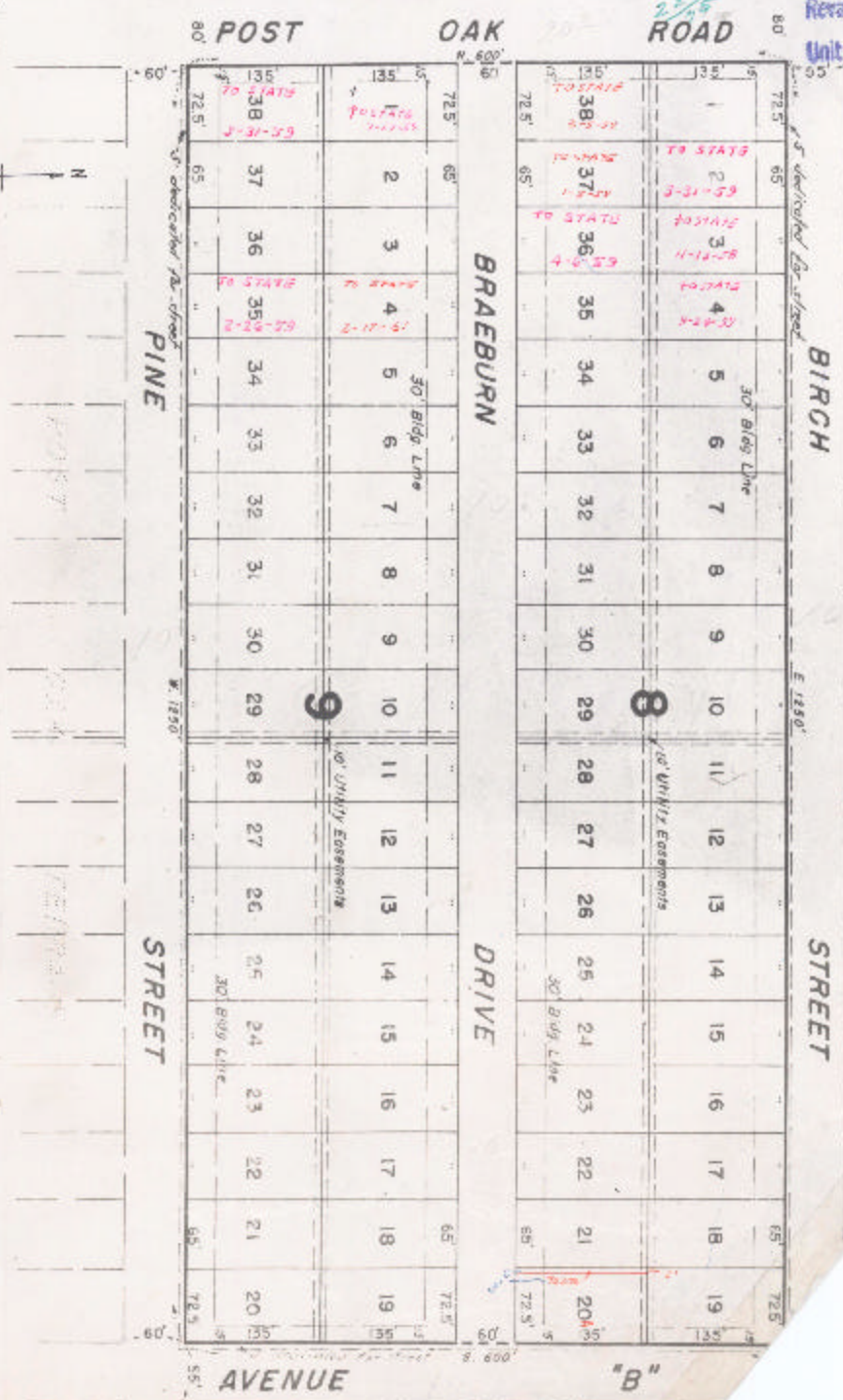
Block or Abstract No. 8-5 Survey or Addition. POST OAK TERRACE SEC. 3 Plat No. S. D. 25 D. D.

1720 AC. QUAD 127 3 BLK 6 WESTHOARSHAND FMS. VOL 27 P. 4

PATENT		DATE		ACREAGE	No.	CLASS	CHARACTER	TO WHOM ISSUED
No.	Vol.	M.	D.					

Scale 1" = 100' in
 7 NEARS MAPS 1/2" DISTANCE
 R.T. BANNER 1/2" 1910

Revalued 19 72
 Unit 22.00
 1971
 35.00



PINE STREET

BIRCH STREET

AVENUE "B"