

ASSESSOR'S BLOCK BOOK FOR HARRIS COUNTY, TEXAS

223

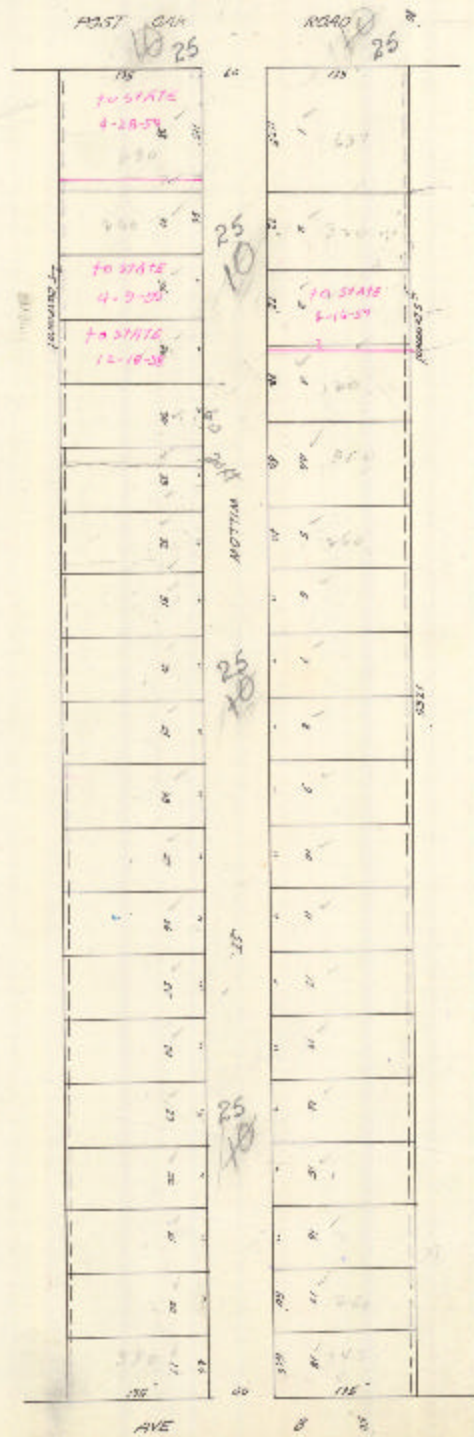
Block or Abstract No. Survey or Addition WILSON LANE PLACE Plat No. S. D. 25 D. D.

RE 3280 LOTS 10-11 BLOCK 5 WESTINGHOUSE, HARRIS, CO. 37 26 43

No.	Vol.	TO WHOM ISSUED	DATE			ACREAGE	TAX CLASS	CERTIFICATE OR SALES	TO WHOM ISSUED
			Mo.	Day	Year				

Scale 1000 inch.  
 GLEN F. TRIMBLE, 21343  
 J. L. M. BRIDGEMAN, 31342  
 10 2000

25<sup>th</sup>  
 1973



79

ASSESSOR