

155/3

ASSESSOR'S BLOCK BOOK FOR HARRIS COUNTY, TEXAS

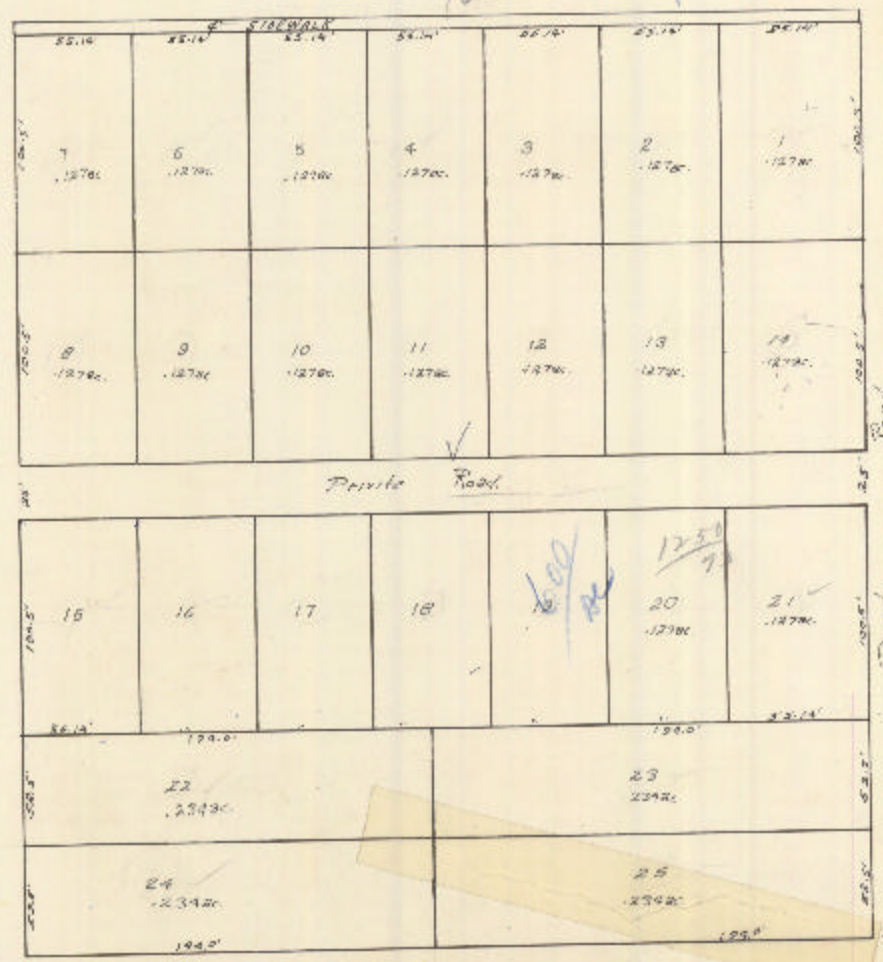
Block or Abstract No. 693 Survey or Addition C.C. SHELBY SURVEY Plat No. 9 S. D. 9 D. D.

PATENT					CERTIFICATE				
No.	Vol.	TO WHOM ISSUED	DATE			No.	CLASS	CHARACTER	TO WHOM ISSUED
			M	D	Y				

Partition of lots - W 1/2 Rts. 73 THRU 100 J. Danneberg (One) C.C. Shelby Survey, Vol. 44 - 14/100

Scale 80' = one inch.

HUMBLE - WESTFIELD ROAD 1750/73



This document covers 1/2 to 25 - 24 1/2 to 15 1/2