

37-63

ASSESSOR'S BLOCK BOOK FOR HARRIS COUNTY, TEXAS

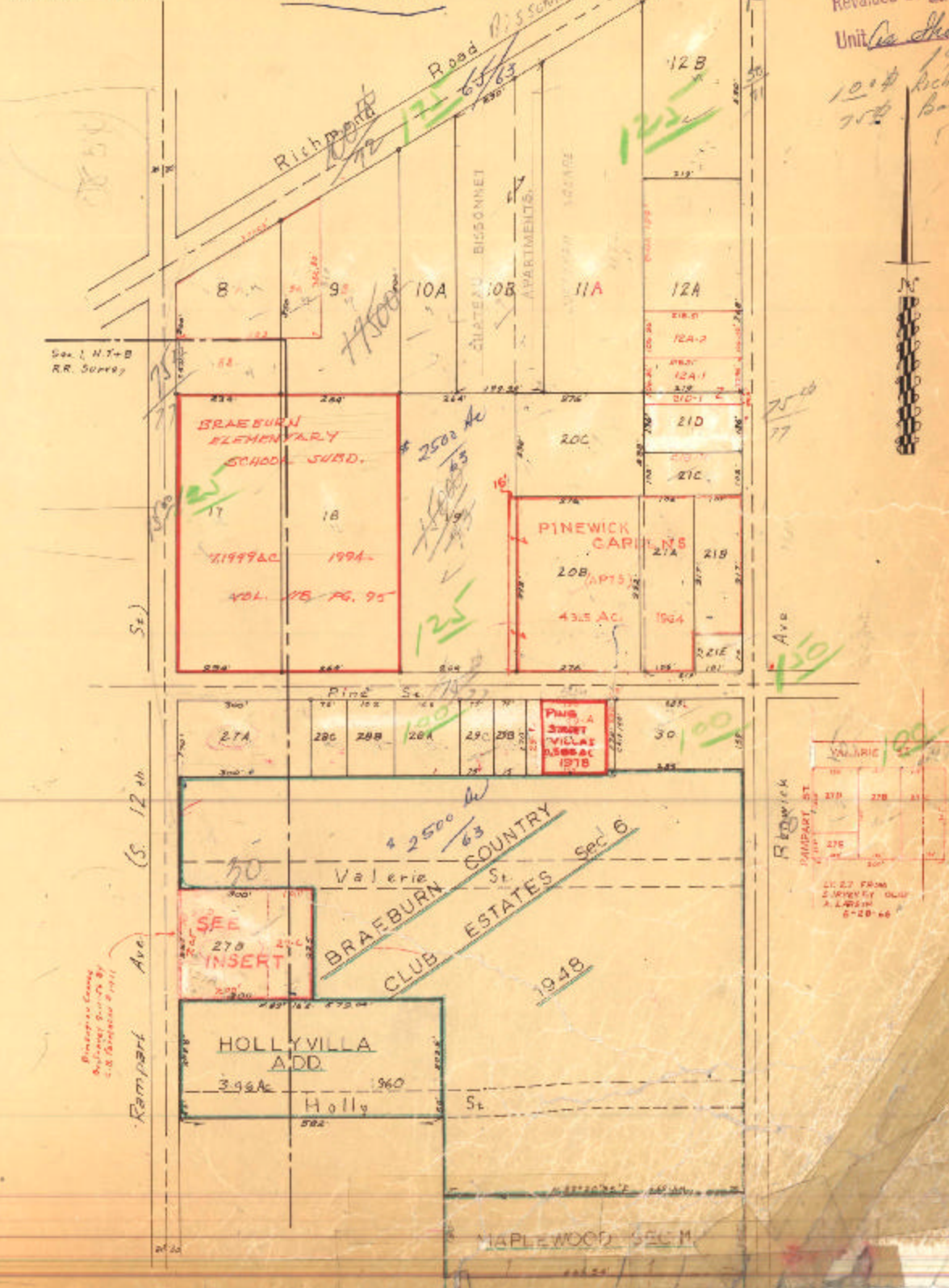
Block or Part of 5 Survey or Addition WESTMORLAND FARMS 2<sup>nd</sup> Plat No. S. D. 1 Village

PATENT				CERTIFICATE			
No.	Vol.	TO WHOM ISSUED	DATE	ACREAGE	No.	CLASS	TO WHOM ISSUED
			M D Y				

Scale 200' one inch.

PLATE 2 of 2

Revalued 19 63  
Unit (a shown)  
10.18 1977  
Richard  
350 Bal.



Harris County  
Surveyed and  
Recorded by  
C. B. Ginter 1971

MAPLEWOOD SEC 11