

ASSESSOR'S BLOCK BOOK FOR HARRIS COUNTY, TEXAS

Block No. 43-44.

WILLAHES

Subdivision Vol. 7-56
Addition W. J. BROWN

Survey

City or Town

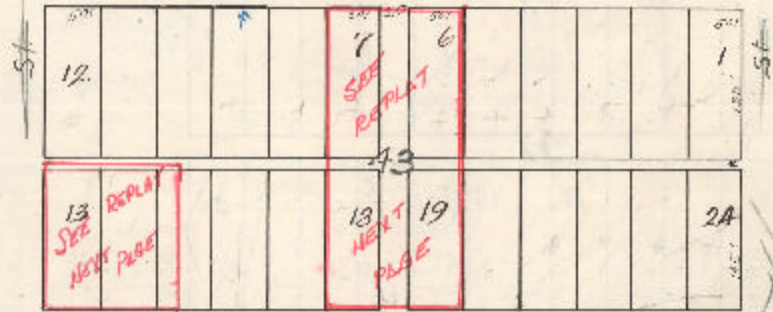
Plat No. ^{TUSTON AND} S. D. -25-
D. D. 12

Scale 100' — one inch.

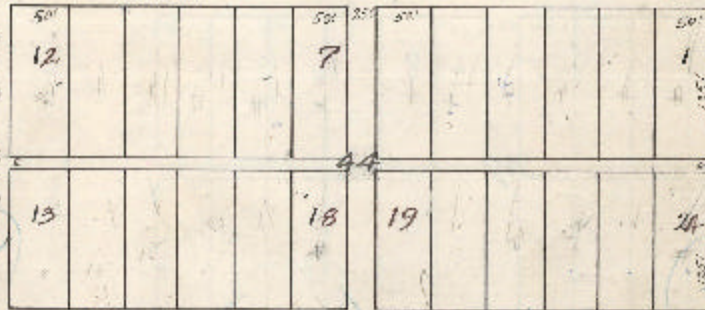
1959 15'00"

Revised 1963
with 60' shown
(in blue)

Chestnut



Beech LOCUST



Spruce

100/63

along with the block lines and their corners show the original and by lines and lot corners as delineated by the marked plat. The DEEDS AND MAPS on which the lots are bounded and their lot boundaries do not conform to the original lot lines. Such variance shall be a part of the record in the block book in evidence of a record and correct as to the actual lot boundaries and the plat on which they are shown.

It is hereby stated that, as shown on this plat, some lots in this subdivision have been returned to said tract or its proceeds or vice versa and have been so set off and shown to conform to the original plat.

subdivided in 10..... into tracts Nos.
 subdivided in 10..... into tracts Nos.
 subdivided in 10..... into tracts Nos.
 subdivided in 10..... into tracts Nos.
 subdivided in 10..... into tracts Nos.